



# **Miva Order 1.15 User Guide**

Revision 1.4



**Miva Corporation**

2629 Ariane Drive  
San Diego, CA 92117

Telephone: 858-490-2570

Telefax: 858-490-0548

<http://www.miva.com>

[info@miva.com](mailto:info@miva.com)

This document and the software described by this document are copyright 2000 by Miva Corporation. All rights reserved. Use of the software described herein may only be done in accordance with the License Agreement provided with the software. This document may not be reproduced in full or partial form except for the purpose of using the software described herein in accordance with the License Agreement provided with the software. Information in this document is subject to change without notice. Companies, names and data used in the examples herein are fictitious unless otherwise noted.

Miva is a registered trademark of Miva Corporation. Miva Script, Miva Order, Miva Merchant, Miva Mia, Miva Empresa, the Miva "blades" logo, and the Miva Engine are trademarks of Miva Corporation. Windows is the registered trademark of Microsoft Corporation. All other trademarks are the property of their respective owners. This document was developed and produced in San Diego, CA, USA.

MIVA CORPORATION WILL NOT BE LIABLE FOR (A) ANY BUG, ERROR, OMISSION, DEFECT, DEFICIENCY, OR NONCONFORMITY IN MERCHANT OR THIS DOCUMENTATION; (B) IMPLIED MERCHANTABILITY OF FITNESS FOR A PARTICULAR PURPOSE; (C) IMPLIED WARRANTY RELATING TO COURSE OF DEALING, OR USAGE OF TRADE OR ANY OTHER IMPLIED WARRANTY WHATSOEVER; (D) CLAIM OF INFRINGEMENT; (E) CLAIM IN TORT, WHETHER OR NOT ARISING IN WHOLE OR PART FROM MIVA CORPORATION'S FAULT, NEGLIGENCE, STRICT LIABILITY, OR PRODUCT LIABILITY, OR (F) CLAIM FOR ANY DIRECT, INDIRECT, INCIDENTAL, SPECIAL, OR CONSEQUENTIAL DAMAGES, OR LOSS OF DATA, REVENUE, LICENSEES GOODWILL, OR USE. IN NO CASE SHALL MIVA CORPORATION'S LIABILITY EXCEED THE PRICE THAT LICENSEE PAID FOR MERCHANT.

MO1004-05, Revision 1.4

# Table of Contents

---

## 1 - About This Guide

Welcome to Miva Order! .....	1
What You Can Do with Miva Order.....	1
Requirements .....	2
How This Manual Is Structured.....	2

## 2 - Setup

Download and De-archive .....	3
Set Up.....	3

## 3 - The Administration System

Header Menu Bar .....	8
The Hierarchical Menu.....	9

## 4 - Building Your Order Form

The Look & Feel of Your Order Form .....	10
Look & Feel.....	10
Body Background Color.....	10
Body Background Image .....	11
Body Text, Body Link, Body Active Link, and Body Viewed Link Colors .....	11
Body Font Face and Body Font Size .....	11
Product List Column Header Backgrounds and Fonts .....	11
Product List Alternate Background Color .....	11
Order Form Column Header Backgrounds and Fonts .....	11
Header and Footer Text .....	11
Order Notification.....	12
Enabled.....	12
From .....	12
To and CC .....	12
Add Brackets to Email Addresses .....	12
Subject.....	12
Mail Host.....	12
Header Text.....	12
Currency Formatting .....	12
Currency Symbol .....	13
Display Currency Symbol .....	13
Thousands and Decimal Separators .....	13
State/Sales Tax .....	13
Remove Code .....	13
State/Tax% .....	14
Shipping.....	14
Remove Shipping Method .....	14
Add .....	14
Base Charge .....	14
Amount/Weight Unit .....	14
Accepted Credit Cards.....	15
Remove Name .....	15
Add .....	15
Add Products .....	15
To Add Products .....	15
Product Code .....	15

# Table of Contents

---

Product Name .....	15
Price .....	15
Weight .....	15
Taxable .....	16
Description .....	16
<b>5 - Importing Products from Flat Files</b>	
Importing Products.....	17
Add product .....	18
Product Code .....	18
Product Name .....	18
Price .....	18
Weight .....	18
Taxable .....	19
Description .....	19
File Upload Product Flat File .....	19
Delimiter .....	20
Importing Your Product Information .....	20
Keep The Existing Products .....	20
Replace The Existing Products .....	20
Update The Existing Products .....	21
<b>6 - Order Processing</b>	
View/Edit an Order.....	23
Create a Batch.....	23
Run a Report .....	23
Delete a Batch .....	24
Process Orders.....	24
<b>7 - Payment Gateways</b>	
Preliminary Tasks .....	26
Payment Gateways.....	27
Anacom Payment Services.....	27
Authorize.Net Payment Services v3.0 .....	28
Cardservice International (LinkPoint API) .....	29
CyberCash.....	30
Cybersource ICS2 .....	31
Payflow Pro (Signio) .....	32
<b>A - Error Codes</b>	
Administration Error Codes.....	33
Order Error Codes .....	34
Database Error Codes .....	34
Utility Error Codes.....	39
ICS Error Codes .....	40
LinkPoint Error Codes.....	40
Mod10 Error Codes .....	41
Payflow Pro Error Codes .....	42
CyberCash Error Codes .....	42
CyberSource Error Codes .....	44

# Chapter 1

## About This Guide

---

### Welcome to Miva Order!

Miva Order is a fully Web-based order form and back-end order processing system that can be personalized with specific color, graphics, product descriptions and other layout options.

This brief introduction to Miva Order includes the following topics:

- What You Can Do with Miva Order
- How This Manual Is Structured
- Requirements

Miva Order is a powerful order form system used to create and manage product order processing. Miva Order runs on any Web server enabled with a Miva engine (either Miva Empresa or Miva Mia). Once installed, it creates its own data set up and configures an order form built upon information entered into browser-based set up and administration modules. Users simply incorporate a link from their Web page where their products are sold, permitting customers to seamlessly access the order form where they can make purchases.

### What You Can Do with Miva Order

- **Easily build a fully functioning, completely customizable order form.**  
By using Miva Order's simple, browser-based administration system, your order form can be completed and fully functional in a minimum of time. Simply connect to the Internet, navigate to Miva Order's administration system, and begin building or editing your form. No knowledge or experience with HTML or any other programming language is required.
- **Add, delete and edit products.**  
Using Miva Order's administration system you can create, remove, and edit products by simply logging into the administration system using your browser. As with all administration functions, your changes take place immediately, allowing you to keep your Internet order form complete and up-to-date.
- **Import product databases as text files.**  
With Miva Order you can import product databases that you maintain off-line. These text files can be created using a number of software packages including MS Access or MS Excel.
- **Configure e-mail notification.**  
You can configure Miva Order to automatically e-mail you when someone places an order. The e-mail message body contains the name of the person who placed the order, the items they ordered, and the amount including tax and shipping.

- **Securely gather customer payment information.**

When Miva Order administration is accessed through your secure server, you can get your customer's credit card or other payment information for off-line or on-line processing. Easy order batching lets you group your orders however you wish. You may also run a report showing all orders in a certain batch and easily save the report to your local computer or print the report.

## Requirements

In order to put your order form on the Web, you must have access to an account with an Internet Hosting Provider (IHP). Most IHPs provide you with browser software to access the World Wide Web (WWW), and space on their server to put your Web site and order form. Since Miva Order fully resides on your server in your Web site account, you can access the Miva Order administration system from anywhere that you have Internet access. This means you can perform all the operations of maintaining your product's order form from virtually anywhere in the world. You will need adequate RAM on your computer to store data files only if you wish to have backup files on your local system.

## How This Manual Is Structured

This manual covers the basic topics that you will need to be able to create and manage your order form with Miva Order.

Your Miva enabled hosting provider usually supplies initial installation and configuration support. If you are unable to find your answers in this manual, ongoing developer and merchant support for using your Miva Order system is available free from Miva Corporation at: <http://www.miva.com/support>.

# Chapter 2

## Setup

---

This chapter discusses the basic information you need to get started with Miva Order. It covers the download, de-archiving, and set up of Miva Order. The topics covered include:

- Download and De-archive
- Set Up

### Download and De-archive

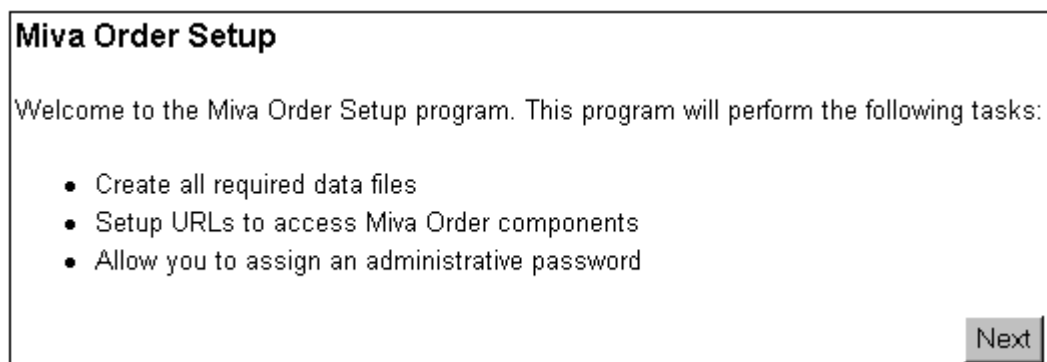
The email that contains the Miva Order license number also has an ftp link for the Miva Order file. Go to the site and download the version of Miva Order your system requires and de-archive it. This process creates the directories required and places the files into the proper directories.

### Set Up

When you go into `setup.mv`, you will be entering the initial administration and URL information for Miva Order. Once you complete your set up, you will be ready to move on to the administration system. This chapter will take you through the following:

- Registering your Miva Order
- Setting up your URLs
- Assigning your password

The first screen displays a greeting along with a list of tasks that the Miva Order `setup.mv` will perform.



1. Click the Next button to continue.

### License Agreement

Miva Order License

BY DOWNLOADING AND/OR IMPLEMENTING THIS SOFTWARE YOU AGREE TO THE FOLLOWING LICENSE:

Last updated: Thu Jan 21 15:23:44 PST 1999

Definitions: (i) "You" and "Developer" refers to the person, entity or organization which is using the software and source code known as "Miva Order", and any successor or

I ACCEPT THE TERMS AND CONDITIONS OF THE LICENSE AGREEMENT

Previous
Next

You will then be prompted to read and agree with the Miva Order license agreement.

2. Select the box accepting the terms and conditions, then click Next. Once that is completed, you are ready to start entering your information.
3. Customer Registration

The next screen is a form prompting you for the following information (**bold** fields are required for Miva Order set up to continue).

- License Number      Type in your license number obtained from your downloaded information.
- Administrator's Contact Information      All information entered in these fields will be used for the configuration of your store. The e-mail address entered will be the recipient of upgrade and update information from Miva Corporation.
- State/Province      Enter your state or province on your order form. Enter the your phone and fax number.
- Click Next to continue.

4. Select Payment Processor

You will be asked to select a Payment Processor from a drop-down menu. Select your processor and click Next. Check the appendixes for your specific payment service.

5. URL Set up

The next step in the set up process is to establish a set of URLs and file system paths for Miva Order. These are used in both installing and running. The 'URL Set up' form prompts you for the non-secure and secure URLs and file system paths to the different components of your Miva Order System. The form is constructed in such a way that you may choose to submit the form 'as is' and accept Miva Order's default settings. If you wish to specify information that is different from the default for any of the items in the form, simply type in

the appropriate information in the field provided. This information can later be changed in `admin.mv`.

6. URL to Miva Order
7. This is the non-secure URL to your order form (`order.mv`). It is usually not necessary to specify a URL that is different from the default unless your server configuration prevents you from accessing Miva Order with the default address.
8. Secure URL to Miva Order

The order form you create in the system will be run in non-secure mode via HTTP. If you are using a secure server to collect and process orders with Miva Order, it may be necessary to specify a different URL than the one the set up program defaults for you to select as a second option.

**URL to Miva Order:**

`http://localhost/Order/order.mv?`

Other:

**Secure URL to Miva Order:**

None

`https://localhost/Order/order.mv?`

Other:

**Secure URL to Miva Order Administration:**

None

`https://localhost/Order/admin.mv?`

Other:

**Root Directory for Graphics:**

`/Order/`

Other:

**Base URL for Graphics:**

`http://localhost/Order/`

Other:

**Secure Base URL for Graphics:**

None

`https://localhost/Order/`

Other:

However, in most cases, your secure URL will be the same as the default URL and look something like the following:

**`https://secure.server.com/Order/order.mv`**

9. Secure URL to Miva Order Administration
 

Just like the secure URL setting that is defined for your order form in the previous field, your Miva Order Administration program can be configured to be secure.
10. Base URL for Graphics
 

The default graphics URL specified is to the directory containing your `graphics` sub-directory. Left to the default settings, Miva Order will

understand that the URL to any of its graphics files will start with something like:

**<http://www.yourdomain.com/Order/>**

Such a URL will be what Miva Order will understand as its base URL to use in referencing graphics in non-secure mode. Again, like the URL to `order.mv`, it is unlikely that you will need to specify a URL different from the default unless your server configuration is non-standard and it makes this necessary.

#### 11. Secure Base URL to Graphics

Just like the secure URL settings for your `order.mv` and `admin.mv` programs, the secure base URL to your Miva Order graphics must follow suit. In the case that you will be using a secure URL for your graphics with Miva Order, it may be necessary to specify a different URL than the one the set up program sets as your default option. If your secure server has a different name than your virtual domain, the secure URL to your Miva Order may be something other than the non-secure URL with the 's' in its transfer protocol definition but NOT including the `graphics/` directory as follows:

**<https://secure.server.com/Order/>**

If you are unsure of your secure server URL, contact your host provider for the correct URL.

#### 12. Assign Administrative Password

The password you enter here will be your access for your Miva Order system. The 'Password', and 'Verify Password' fields will accept any characters including spaces.

---

**Caution:** Only you know your password. Forgetting your password will keep you from updating your order form or administration settings. Be sure that the password you select is one that you will be able to remember or have it written down in a safe location.

---

This is the final step in the set up process. After submitting the 'Create Administration Settings' form, the responding screen will contain information that confirms the set up was successful. Along with this information, two hyperlinks will guide you to your `admin.mv` administration interface and `order.mv` shopping interface.

### Setup Progress

**Creating Data Files:** ok

**Saving Registration Information:** ok

**Initializing Country Database:** ok

### Miva Order Setup Complete

You may access the administration interface at <http://localhost/Order/admin.mv?>

You may access the shopping interface at <http://localhost/Order/order.mv?>

## Chapter 3

# The Administration System

---

The administration system is where your Miva Order form is controlled. You must log into the administration system (`admin.mv`) to configure your order form. We will cover the following in this chapter:

- The Login Screen
- The Administration Screen
- The Header Menu Bar
- The Hierarchical Menu

The login screen is displayed.

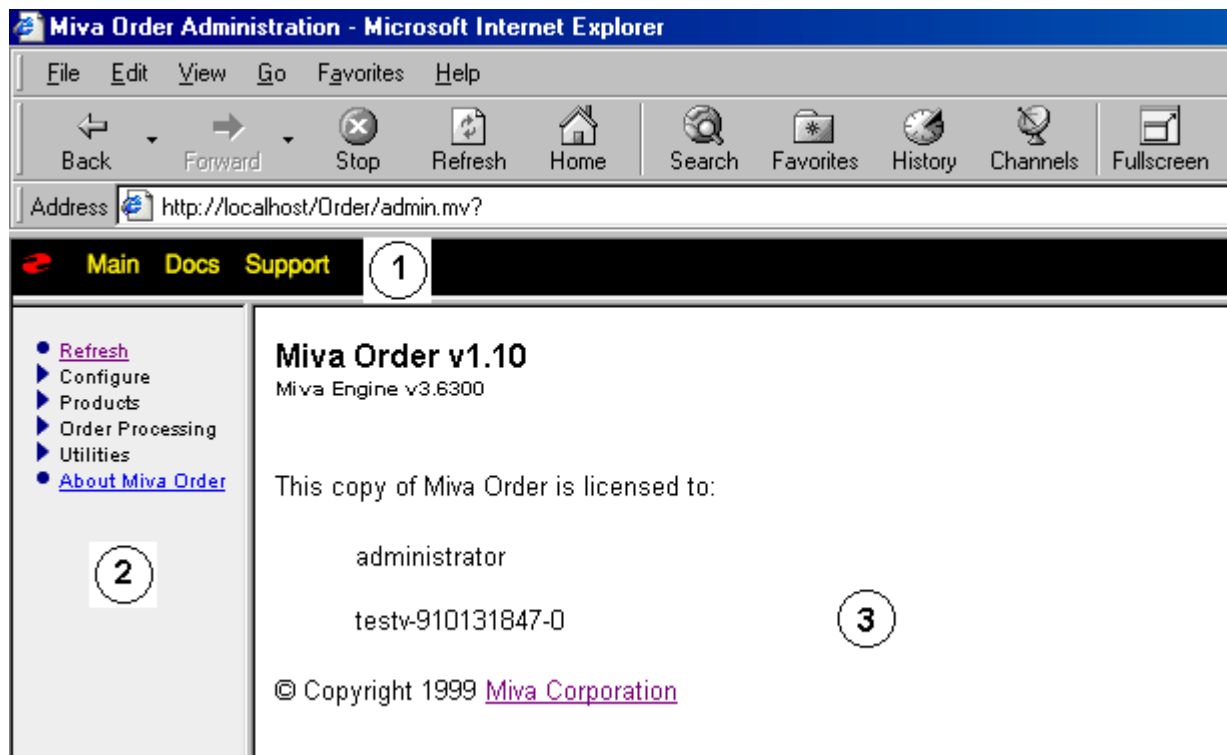
1. Enter the password you assigned when you ran the `setup.mv`. The password is case sensitive.



The screenshot shows the Miva Order 2 login interface. At the top is the logo for Miva Order 2, with 'MIVA' in black, 'Order' in blue, and a red '2' with a swoosh. Below the logo is the text 'Welcome!'. Underneath is the label 'Password:' followed by a text input field. Below the input field is a button labeled 'Login'.

2. The Administration Screen

After you have successfully logged in, you will be presented with the administration screen.



There are three sections to the administration interface:

1. header menu bar
2. dynamic hierarchical left margin menu
3. main data entry area.

## Header Menu Bar

The Header Menu Bar has navigation links for you to connect with the Miva Web site.



The 'Docs' link accesses the available documentation for Miva Order or other Miva products. The 'Support' link connects you with Miva's Support page. Here you can ask questions on the list as an additional resource to this manual. 'Main' returns you to the main administration screen.

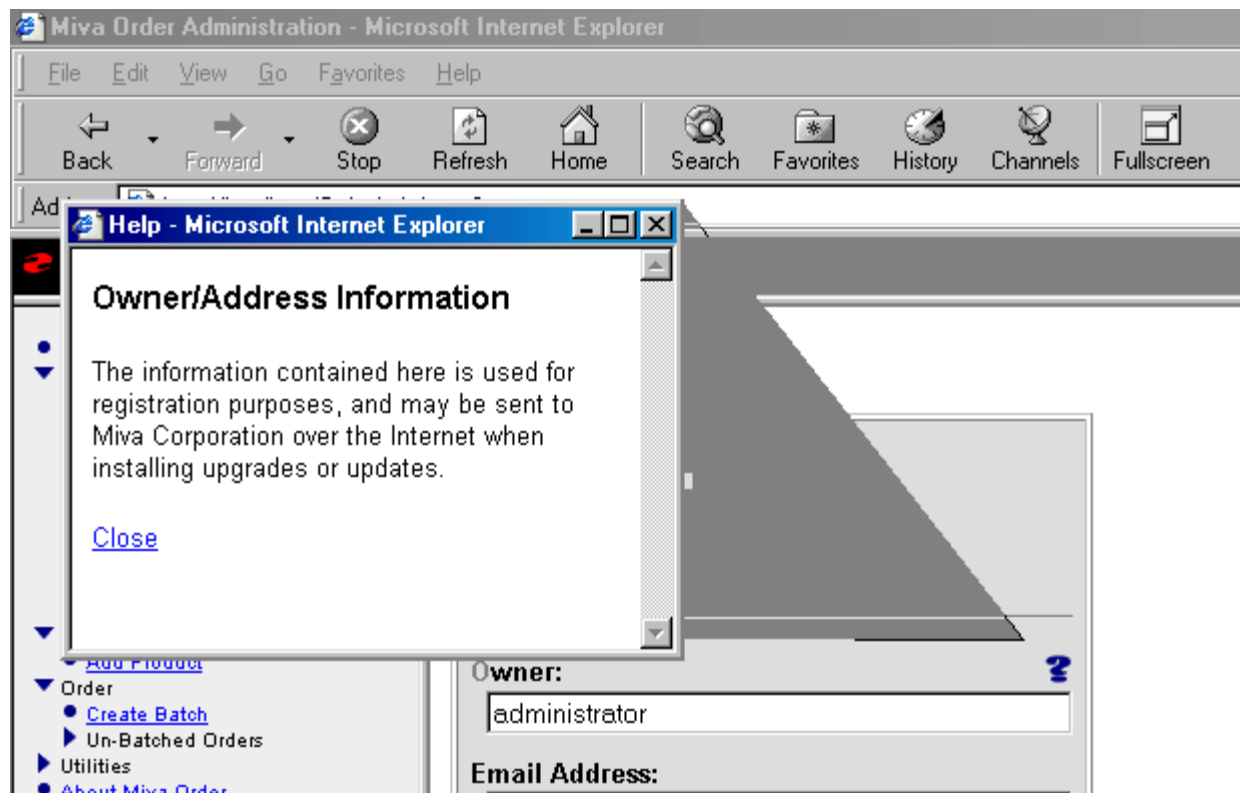
## The Hierarchical Menu

You can expand or collapse the hierarchical menu for a particular item by clicking on the arrow directly to the left of the menu item. A bullet is used when an item has no subordinate items.



To accommodate nested sub-items in the menu, resize it by grabbing the frame border (left mouse click and hold) and dragging left or right.

Next to some fields in the data entry area, you'll find blue '?' icons which when selected display help information about the field.



# Chapter 4

## Building Your Order Form

---

Building your order form involves the setting of your page formats. What size fonts do you want to use? What color background would look nice for your Web site? Here we will take a look at:

- The Look & Feel of Your Order Form
- Setting Up the Order Notification
- Currency Formatting
- State Sales Tax
- Shipping
- Adding and Removing Accepted Credit Cards
- Adding Products

Use your browser to access Miva Order administration (admin.mv). At start-up, the menu will display 'Refresh' (to refresh the menu hierarchy), four top level configuration options, and 'About Miva Order.'

### The Look & Feel of Your Order Form

Expand the 'Configure' option by clicking on the arrow next to it, and then click the option you wish to edit. The form that appears in the data area will prompt you for basic information on your new order form.

#### Look & Feel

You can adjust the look of the text and the background of your pages of Miva Order.

#### Body Background Color

Choose hexadecimal codes to display a certain background color. Hexadecimal color-codes range from #000000 for black to #ffffff for white. Standard HTML text color labels such as 'blue', 'yellow', etc. work also. It is better to use Web safe colors.

There are some hexadecimal colors that are not Web safe. If you break your hexadecimal numbers down to their RGB (Red-Green-Blue) equivalents, the Web safe colors are 0 and those equally divisible by 51. This is because these are the 216 colors chosen by Windows and MAC platforms to make up their palettes of colors. The colors that aren't represented here are the colors that these try to make up by dithering. In other words, the safe RGB colors are 0, 51, 102, 153, and 254. The colors correspond with the hex code shades 00, 33, 66, 99, cc, and ff. Using just those 6 hex combinations over red, blue, and green, gives a total of 216 colors that will render perfectly on your screen.

**Body Background Image**

To set a background image to be tiled on your order form, enter the URL for the placed image *or* use the file upload feature. Choose 'Upload File' and click browse. This background image will appear on all pages of your order form. A 'Choose File' window will open allowing you to browse your computer and locate the background image you wish to use. Click on the file, and click 'Open.' Check 'overwrite' to replace an image.

**Body Text, Body Link, Body Active Link, and Body Viewed Link Colors**

These fields allow you to set their respective colors the same way the 'Body Background Color' is set – as shown previously.

**Body Font Face and Body Font Size**

In the 'Face' field, enter a font name or comma delimited list of font names (i.e. *Arial, Helvetica*). In the 'Size' field, enter a positive or negative integer (i.e. *+n* or *-n*) or enter an absolute size (i.e. *2*), to make the body text in each of the screens larger or smaller. Null values in these fields will mean that body text displayed in the different screens of your Miva Order will be in the default font and size that is configured by the browser.

**Product List Column Header Backgrounds and Fonts**

Information entered to these fields controls the text, background colors, font face, and font size of your product list. For the colors, you may enter either a symbolic name, such as *blue* or *red*, or a hexadecimal color code, such as *#0000ff* or *#ff0000*.

**Product List Alternate Background Color**

If a value is entered into this field, it will be used as the background color for every other row in the product list, giving a "green bar" effect. You may enter either a symbolic name or a hexadecimal color code.

**Order Form Column Header Backgrounds and Fonts**

These fields allow you to change the color of the text in the header row above the customer information on the order form or the color of the background. As stated previously, you may enter either a symbolic name, such as *blue* or *red*, or a hexadecimal color code, such as *#0000ff* or *#ff0000*.

In the 'Face' field, enter a font name or comma delimited list of font names (i.e. *Arial, Helvetica*). In the 'Size' field, enter a positive or negative integer (i.e. *+n* or *-n*) or enter an absolute size (i.e. *2*), to make the body text in each of the screens larger or smaller. Null values in these fields will mean that body text displayed in the different screens of your Miva Order will be in the default font and size that is configured by the browser.

**Header and Footer Text**

You may enter the text to be displayed immediately before or after the product list or order form on Miva Order. You may also add a Header or Footer for your Thank You message. You may enter any combination of text and HTML.

## Order Notification

You may set up to whom Miva Order should make Order Notification.

### Enabled

If this check-box is checked, Miva Order will send an e-mail notification message each time an order is placed.

### From

Email notification messages sent by Miva Order will appear to come from this address. If you select the radio button for 'Customer's Billing Email Address,' then the e-mail address entered by the customer as part of the ordering process will be used. Otherwise, you may select 'Other' and enter any e-mail address to use as the sender.

### To and CC

Enter the e-mail address of the recipient of your e-mail and the address of any individual you wish to receive copies of the e-mail.

### Add Brackets to Email Addresses

Some SMTP servers require that e-mail addresses be enclosed in angle brackets (i.e. <email@sample.com>). If checked, Miva Order will add angle brackets to e-mail addresses that do not already contain them. However, if used, the e-mail address will not appear on the invoice or batch report.

### Subject

The text configured here will be used as the subject of e-mail notification messages sent by Miva Order.

### Mail Host

This field should be set to either the IP address or hostname of your SMTP server. Your IHP should be able to assist you in obtaining this address.

---

**Caution:** Miva Order will not be able to send e-mail notification messages unless a valid Mail Host is configured.

---

### Header Text

The text entered into this field will be included immediately before the order information in e-mail notification messages.

### Currency Formatting

You may set up how Miva Order formats your currency display.

## Currency Symbol

Enter the currency symbol. The default is '\$' for American dollars.

## Display Currency Symbol

Select a radio button to display the currency symbol either before or after the value amount.

## Thousands and Decimal Separators

The default is set up for American display. A comma (,) is displayed for the thousands separator and a period (.) is used for the decimal separator. To change, edit by entering your preference.

## State/Sales Tax

Miva Order calculates sales tax based on the state of the shipping address of the customer. In addition, the states listed here are used to generate the drop-down lists on the order form. If the tax rate for a state is set to 0%, then *no* tax will be assessed for customers in that state. Otherwise the configured percentage of the order total will be added to the order.

States/Sales Tax ?	
Remove Code	State
<input type="checkbox"/>	Outside US
<input type="checkbox"/> AK	Alaska
<input type="checkbox"/> AL	Alabama
<input type="checkbox"/> AR	Arkansas
<input type="checkbox"/> AZ	Arizona
<input type="checkbox"/> CA	California
<input type="checkbox"/> CO	Colorado

### Remove Code

To remove a particular state from your Miva Order table, simply click on the check box to the left of the state tax you wish to delete and click 'Update'.

**Caution:** Removing the default value of "Outside US" will result in your user having to fill in both the "Ship to" and the "Bill to" side of the order form.

**State/Tax%**

You may add a State or Local tax code by entering the code, name of the tax location and the tax percentage at the bottom of the table. Click on 'Update' to complete your edit.

<input type="checkbox"/> WV	West Virginia
<input type="checkbox"/> WY	Wyoming
<b>Add:</b>	
<input type="button" value="Update"/>	

**Shipping**

Miva Order calculates shipping cost based on the shipping method that the customer chooses. In addition, the shipping methods listed here are used to generate the drop-down lists on the order form. If base charge and amount/weight are set to 0 (zero), then *no* shipping cost will be assessed for customers. Otherwise the configured shipping cost will be added to the order.

Shipping ?		
Remove Shipping Method	Base Charge	Amount/Weight Unit
<input type="checkbox"/> Basic	1.00	0.75
<b>Add:</b>		
<input type="button" value="Update"/>		

**Remove Shipping Method**

Select the checkbox next to the shipping method you wish to delete. Click 'Update.'

**Add**

Enter the name of the shipping method as well as the Base Charge and the Amount/Weight Unit. Click 'Update.'

**Base Charge**

Enter amount here for a base charge amount to be assessed for shipping.

**Amount/Weight Unit**

Enter the amount to be charged for each weight unit.

## Accepted Credit Cards

Credit cards listed here will be displayed as options in a drop-down list on the order form.

### Remove Name

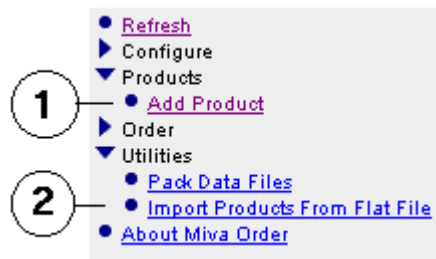
To remove a credit card name from the list, simply select the check box to the left of the name and click on 'Update.'

### Add

To add a credit card name to the list, type in the name in the field provided. Click on 'Update.'

## Add Products

There are two ways to add products into Miva Order. To add products one at a time, you may (1) add products directly into Miva Order. To add one of more products at a time you may (2) add the products by batches. You may import flat data text files created in any plain text or spreadsheet editor.



### To Add Products

To add a product to Miva Order, simply click on 'Add Product' under the 'Products' listing. Fill in the form that appears for each product.

### Product Code

Enter a unique code for the product that will be used by Miva Order to identify the product. You may use any value you wish, but only one product may have a specific code.

### Product Name

Enter the name of your product.

### Price

Enter a decimal amount for the base price of the product. Example: '3.95' (use numeric data only – no '\$' – the '\$' is inserted automatically).

### Weight

Enter a decimal number here to represent the weight of the product. This information is used to calculate shipping on a customer's order. If 0 is entered, then no shipping charges will be applied for the product.

**Taxable**

Leave the box checked if you will need to charge tax on the sale of the product. If not, click the box to uncheck it.

**Description**

Enter a text only or HTML-enhanced description of the product here. If you are using HTML in your product description, 'IMG' tag 'SRC' values can be either full URLs or relative paths. In general, the decision to use full URLs or relative paths for your store's graphics must depend on your portability plans for your order form. If at some point in the future you find yourself moving your Miva Order system to a different server, for example, relative paths to reference your graphics are best.

Each time the 'Add Product' form is submitted, the form will return ready to gather information on the next product you wish to add.

# Chapter 5

## Importing Products from Flat Files

Importing files from a .txt file can save you a lot of time. You can replace your entire product database or just update specific products. We will cover the following:

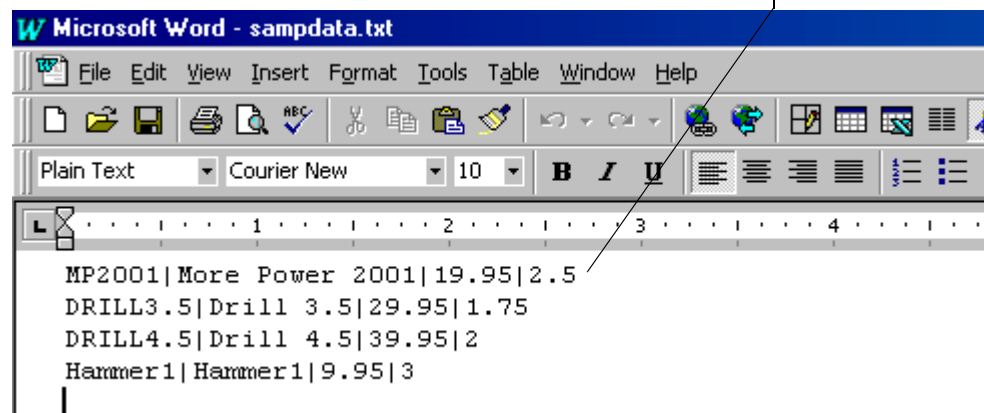
- Add Product
- File Upload Product Flat File
- Delimiter
- If Products Being Imported Already Exist
- Keep the Existing Products
- Replace the Existing Products
- Update the Existing Products

### Importing Products

Miva Order gives you the option of importing your products from a flat text file – as opposed to entering them one at a time using the ‘Add Product’ form. Such a file may be created in any plain text, spreadsheet, or database editor that has the ability of writing to a regular text file. The list of editors that you can use for this includes, but is not limited to, the following:

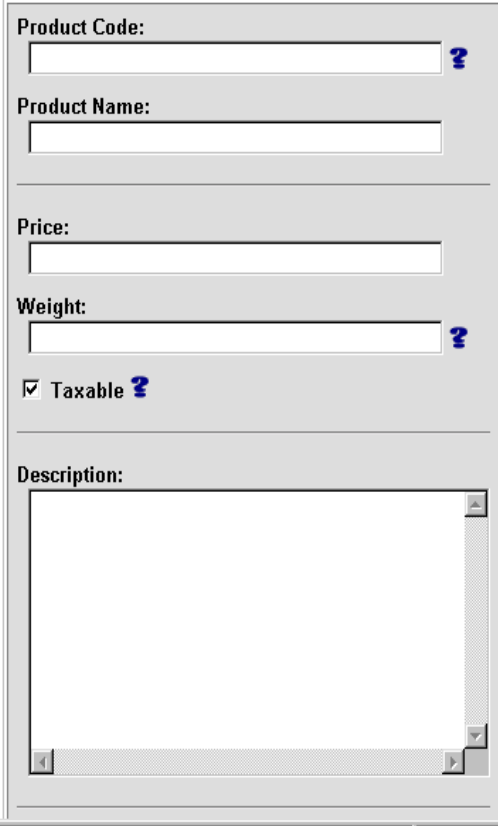
- HoTMetal Pro
- Microsoft Excel/Access
- FileMaker Pro
- BBEdit
- SimpleText
- NotePad
- VI or VIM
- DOS Edit
- WordPad (save as ASCII text)

.txt file created in MS Word with the fields delimited by ‘|.’



## Add product

To begin, examine the 'Add Product' form and view the fields that prompt you for the information on a product. Following is a list of product record fields that can be filled with an import and the types of data that will work in each.



The screenshot shows a web form titled 'Add Product'. It contains the following fields and controls:

- Product Code:** A text input field with a blue question mark icon to its right.
- Product Name:** A text input field.
- Price:** A text input field.
- Weight:** A text input field with a blue question mark icon to its right.
- Taxable:** A checkbox that is checked, followed by a blue question mark icon.
- Description:** A large text area with a scroll bar on the right side.

### Product Code

A product code is simply a unique identifier used to reference each product. You may use any text you wish (including spaces) and/or numbers but only one product may have a specific code. Do not use HTML.

### Product Name

Enter the name of your product using any text (including spaces) and/or numbers. You may use HTML, but you are limited to a total of 100 characters (including spaces) in the Product Name field.

### Price

Use decimal numeric data only. Do not use any currency punctuation or text.

### Weight

You may use decimal numeric data only. Do not use text.

**Taxable**

“Yes,” “True,” (case insensitive) and positive numbers will all mean that the item is taxable. Any other string, null (nothing), zero, and any numbers other than positive whole numbers will mean that the item is not taxable.

**Description**

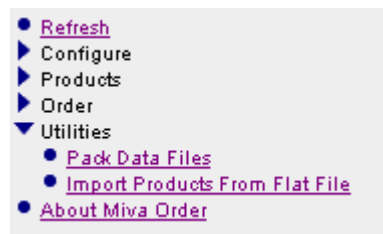
Text and HTML (or any code understood by a browser i.e., JavaScript, etc.).

The above fields are what each record in your import file can contain for use in the Miva Order system.

Click on the ‘Import Products From Flat File’ option.

**File Upload Product Flat File**

The form prompts you for the path to your import file relative to your top Miva data directory (see Chapter 3, ‘Set Up’), or you can use the file upload feature and browse your local computer to locate the file. In addition, you must choose the delimiter character, or string of characters, used to separate fields in each record of the file.



If you choose to ‘Import Products From a File Already on The Server’ and it is in your top Miva data directory, enter the full name of the file only – being sure to include the extension (i.e. filename.dat or filename.txt). If your import file is located in a subdirectory of this top Miva data directory, include the path to the file along with the file’s name (i.e. import\_files/22oct98/products.dat).

You may also use the file upload feature. Click ‘Browse’ to search your local computer, locate the file and click ‘Open.’ This will place the file path into the form field and automatically upload to the proper place on your server when you click ‘Next.’

 A screenshot of a web form titled 'Data File:'. It has two radio button options: 'Import Products From a File Already on The Server' (selected) and 'Upload a File To The Server'. Below the first option is a text input field. Below the second option is a text input field and a 'Browse...' button. Underneath is a 'Delimiter:' section with a radio button for 'Tab' (selected) and a radio button for 'Other:' followed by a small text input field. At the bottom left is a 'Next' button.

**Delimiter**

By default, Miva Order will look for a tab character (ASCII 9) as the delimiting character between fields in each record. If your import file uses a different delimiter between fields select 'Other,' and enter that character or string of characters in the text field provided.

Click 'Next.' A new form appears with the path to the data file.

**Importing Your Product Information**

In addition to being able to import your original product file to Miva Order, you are also able to import product records from a text file when products already exist. You are able to import and keep the existing product records, replace existing records, or update the existing records. Just select the radio button for the option that you desire.

**Data File:**  
C:\Documentation\Miva Order\samdata.txt

---

**If Products Being Imported Already Exist:**

Keep The Existing Products  
 Replace The Existing Products  
 Update The Existing Products

**Fields:**

Row	Product Code	Name	Price	Weight
1	MP2001	More Power 2001	19.95	2.5
2	DRILL3.5	Drill 3.5	29.95	1.75
3	DRILL4.5	Drill 4.5	39.95	2
4	Hammer1	Hammer1	9.95	3

Below is a description of the different options.

**Keep The Existing Products**

Select this option if you are importing a file that contains the same product records that already exist on your order form plus new records that do not. Miva Order will add the new records that were not on your form previously – leaving the existing product records in the store untouched.

If the file you just imported doesn't show all your fields, the problem may be that you did not save your data file as a text file. Bringing in a .doc or .xls file will not work. It will show only 'Row' as in the example above.

**Replace The Existing Products**

To replace product records with new information from the import file select this option. All product records in the form which contain product codes that match

those found in the records of the import file will be overwritten with the new information from the imported records. Null entries in any fields will overwrite fields on the form, which contain data.

### Update The Existing Products

Slightly different from replacement is updating. Where selected fields in selected product records need updating with new information, and all other information in the given record needs to be left untouched and intact, use the update option.

For example, your order form has 20 different product records, and the price fields in records 1, 5, 12, and 17 need updating. In such a case select the 'Update' option, and in the form that follows you'll be able to choose from which of the fields in your import file you want Miva Order to get its new data for price. All the records that perfectly match those being imported (2 through 4, 6 through 11, 13 through 16, and 18 through 20) will be left untouched.

All of the records on the form with information (in the specified fields) that differs from information in matching imported records will be overwritten with the new imported information.

**Data File:**  
C:\WINDOWS.000\Desktop\Test.txt

**If Products Being Imported Already Exist:**

Keep The Existing Products  
 Replace The Existing Products  
 Update The Existing Products

**Fields:**

Row	Product Code	<Skip>	Price
1	naut-0	<Skip>	3.95
2	naut-1	Name	4.95

Import

The form also displays a table of the first 5 records in your import file (the example shows a flat file with only two products). A drop-down select list of the different Miva Order product record fields allows you to assign your data to these fields.

As you can see, the sequential order of the fields in your import file has no bearing on that of the product records on your order form. This is because you have the power to tell 'Import Utility' exactly "what" to grab "where," as well as "what to call it" and "where to put it."

Be sure that when designating one or more fields in your import file for writing to product records in your store you first designate the field that contains 'Product Code' because that is what Miva Order will use to find the correct records to update. All extra fields in your import file that contain information not assigned will be ignored. Only the information in the fields that you designate will be imported.

The fields that are left with the 'Skip' option selected above them will not have any effect on the form's product records when updating with import.



However, when replacing product records on the order form that have been designated as target fields for data, the import field will be filled with data. All other information on the order form's product record will be wiped out with null values.

To maximize the convenience of using the flat file import utility, you should designate as many store product record fields as recipients of import data as possible when importing new product records. Ideally, each of the 'Product Code,' 'Product Name,' 'Price,' 'Weight,' 'Taxable,' and 'Description' fields should be filled at once with the flat file import.

# Chapter 6

## Order Processing

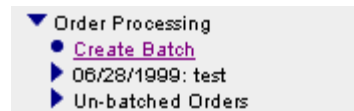
---

Here we will discuss how to process the orders that will start to flow in once you have completed your set up of Miva Order. The following topics will be covered.

- View/Edit Order
- Create Batch
- Run Report
- Delete Batch
- Process Orders

### View/Edit an Order

Miva Order's order processing system organizes your orders in an 'Un-batched' list giving you the opportunity to create a batch of orders to process one by one. Expand the 'Order Processing' portion of your Miva Order menu, and then expand the 'Un-batched Orders' list that appears. To view or edit information in an order, click on an order listing to load the 'Edit Order' screen for the particular order. You may also delete an individual order from the 'Un-batched' list.



### Create a Batch

To make a batch of orders from the 'Un-batched' list, click 'Create Batch' and give your order batch a name in the field provided. Once you've named your new batch you'll be able to run an accounting report on the batch of orders and begin processing them.

When you create the new batch of orders, those orders are cleared out of the 'Un-batched Orders' list and a listing for the newly created batch appears in the menu under the 'Create Batch' list.

### Run a Report

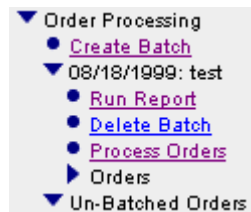
Expand a batch listing and view its subordinate items. To run reports of each order in the batch, click the 'Run Report' option. The following figure shows a Batch Report.

## Batch Report

Order #1000				
Ship To:		Bill To:		
<b>Name:</b>	Tim Taylor	<b>Name:</b>	Tim Taylor	
<b>Email Address:</b>	ttaylor@hi.com	<b>Email Address:</b>	ttaylor@hi.com	
<b>Phone Number:</b>	555-555-1212	<b>Phone Number:</b>	555-555-1212	
<b>Fax Number:</b>		<b>Fax Number:</b>		
<b>Company:</b>		<b>Company:</b>		
<b>Address:</b>	22 Twain Street Anytown, CA 92117 US	<b>Address:</b>	22 Twain Street Anytown, CA 92117 US	
Payment Information				
<b>Card Number:</b>	411111			
<b>Expiration:</b>	9/2000			
<b>Card Holder:</b>	Tim Taylor			
<b>ICS Order Number:</b>	23000000221116			
<b>Authorization Code:</b>	IN2905			
<b>Payment Authorized:</b>	08/18/99 13:44:23			
<b>Merchant Transaction #:</b>	296769752			
<b>Amount Authorized:</b>	13.20			
Code	Name	Quantity	Price/Ea.	Total
	Hammer2 Hammer Ball peen	1	\$9.95	\$9.95
			<i>Sales Tax:</i>	\$0.77
			<i>Shipping: Basic:</i>	\$3.25
			<b>Total:</b>	<b>\$13.97</b>

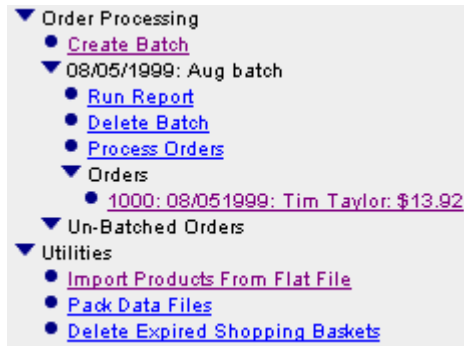
## Delete a Batch

Click 'Delete Batch' to remove the batch with all of its orders from the system.



## Process Orders

Click the 'Process Orders' option and view the list of orders that appears. Next to each of the order listings are 'Process' and 'Mark as Processed' buttons. The system is only making a mark on the order and not actually billing a credit card account.



The payment processing step that interfaces with remote processing servers does credit card validation at the point of entry to the order form in the order form's runtime (`order.mv`), but does not actually bill the credit card until the order is affirmatively processed in the form's administration interface (`admin.mv`). After processing (marking as processed) a given order in a batch, the order disappears from the 'Un-batched Orders' list. The "Process" and "Mark as Processed" buttons will not appear on the form once the order has been made part of a batch.

#### Process Orders: 07/02/1999: test5

##### Order #1005

Visa

**Name on Card:** Tim Taylor  
**Card Number:** 4111-1111-1111-1111  
**Expiration Date:** 3/2000

Process

Mark as Processed

# Chapter 7

## Payment Gateways

---

Although Miva Order handles credit card processing, not all credit card processing options are available on all versions of Miva Order. This chapter shows the different options that work with Miva Order.

- Credit Card Simple Validation
- Authorize.Net Payment Services v3.0 <http://authorizenet.com>
- Cardservice/LinkPoint Payment Gateway <http://www.cardservice.com>
- CyberCash Payment Services <http://www.cybercash.com>
- CyberSource ICsv2 Payment Services <http://www.cybersource.com>
- Signio Payflow Pro (PaymentNet) <http://www.signio.com>

### Preliminary Tasks

Following list shows the tasks you must complete to go live:

- Get a merchant account
- Register with the payment gateway company, unless you are using Simple Validation
- Create your storefront with goods and/or services for sale
- Download the .pem file
- Run test transactions
- Go live

---

**Note:** You can perform the first four tasks in parallel for faster setup time.

---

- **Getting Your Merchant Account**  
Getting your merchant account is relatively easy. All you need to do is inform your financial institution that you want to open a merchant account that can accept credit card payments. Your financial institution will need to know what you are selling, and how and when your products or service are delivered.
- **Visit the Payment Gateway Website**  
When you visit the payment gateway website you get the latest information and apply for your account.
- **Going Live**  
Once your merchant account is set up, your financial institution will communicate your merchant account information to the payment gateway company so it can ensure that credit card service payments are handled properly.

## Payment Modules

The following Payment modules are available in Miva Order. Select only one.

### Simple Validation

This is a simple credit card validation payment module. It verifies that the credit card number is a valid number, based on your entries for the prefix and number of digits. It does not validate credit card payments.

### Authorize.Net Payment Services v3.0

Everyone recognizes that Internet commerce is the next big opportunity - for businesses, for financial institutions, and for consumers. But doing business on the Net means finding a secure, cost-effective, and reliable way to collect payment and process transactions.

Authorize.Net™ fills that need with a server-based transaction-processing system that enables businesses to authorize, process, and manage credit card and electronic check transactions in a real-time, online environment. Best of all, these transactions can be conducted from any computer with an Internet connection and a Web browser.

Merchants simply send Authorize.Net the information we need to process their transactions over a secure, encrypted Internet connection. Authorize.Net takes care of the rest on our sophisticated transaction processing system. That means businesses get all the advantages of our fast, reliable commerce servers; powerful databases; and fast, secure, leased-line connections to financial institutions right from their Web browser. All without the hassle, complexity, and expense normally associated with processing and managing payment on the Internet.

<b>Login ID:</b>	<input type="text" value="testing"/>
<b>Password:</b>	<input type="password" value="XXXXXXXXXX"/>
<b>Authorize.Net URL:</b>	<input type="text" value="https://secure.authorize.net/gateway/transac"/>
<b>Charge Method:</b>	<input checked="" type="radio"/> Online (Automatic Capture) <input type="radio"/> Offline (Authorize Only, Capture Later) <input type="checkbox"/> Store Entire CC Number <input checked="" type="checkbox"/> Test Mode
<b>Available Payment Methods:</b>	<input type="checkbox"/> Electronic Debit <input checked="" type="checkbox"/> American Express <input checked="" type="checkbox"/> Discover <input checked="" type="checkbox"/> MasterCard <input checked="" type="checkbox"/> Visa

## Cardservice International (LinkPoint API)

To add Cardservice International functionality to your Miva Order order form you will first need to obtain a Cardservice International LinkPoint API merchant account.

After you have visited the Cardservice web site for the latest information and applied with them, you receive your 'merchant account.' A 'MID' and a "TIP" number is generated by the LinkPoint API Secure Payment Gateway and a 'digital certificate' or RSA key (.PEM file) is issued to you. These are your unique identifiers for Cardservice International LinkPoint API. They will have instructions to read and continue installation.

The following form will appear:

<b>Configuration File:</b>	
<input type="text" value="miva"/>	
<hr/>	
<b>Server Hostname:</b>	
<input type="text" value="secureweb.clearcommerce.com"/>	
<hr/>	
<b>Server Port:</b>	
<input type="text" value="1139"/>	
<hr/>	
<b>Key File:</b>	
<input type="text" value="miva.pem"/>	
<hr/>	
<b>Type of Transaction:</b>	
<input checked="" type="radio"/> Pre-auth/Post-Auth	
<input type="radio"/> Sale	
<input checked="" type="checkbox"/> Store Entire Credit Card #	
<hr/>	
<input checked="" type="checkbox"/> Test Mode	
<hr/>	
<b>Process the Following Types of Credit Cards:</b>	
<input checked="" type="checkbox"/> American Express	<input checked="" type="checkbox"/> Diner's Club
<input type="checkbox"/> Discover	<input checked="" type="checkbox"/> MasterCard
<input checked="" type="checkbox"/> VISA	
<hr/>	
<input type="button" value="Update"/>	<input type="button" value="Remove This Module"/>

**Configuration File:** Enter the reference configuration supplied by Cardservice International LinkPoint API Secure Payment Gateway.

**Server Hostname:** Enter the server hostname: secureweb.clearcommerce.com

**Server Port:** Enter the server port supplied by Cardservice International LinkPoint API Secure Payment Gateway.

**Key File:** Enter the digital certificate file supplied by Cardservice International LinkPoint API Secure Payment Gateway.

**Type of Transaction:** Select between the two options for the type of transaction. Default is Pre-authorization/Post-authorization (Pre-Auth/Post-Auth).

**Store Entire Credit Card Number:** Check this option if you need the full credit card information to display at order processing in administration. This is a requirement for "Pre-Auth/Post-Auth" and is optional for the "Sale" type of transaction. It is useful if you allow your customers the option of having a standing order. For example: "Please send me one pound of this coffee once every two weeks."

**Test Mode:** Leave checked when running a test. Remove the checkmark when you are ready to go live.

**Process the Following Types of Credit Cards:** Leave checked the credit card types you will accept.

### Configuring Your Server for Cardservice International (LinkPoint API)

After you have obtained your 'Merchant ID' and 'digital certificate' from Cardservice International, you are ready to configure your server.

Find your top data directory in your web account on the server. This directory is most often called 'mivadata' or 'htsdata' and usually resides either inside your home directory or parallel to your document root (HTML) directory. Inside your data directory is where Miva Order has installed all of its data (i.e. htsdata/Order/).

Create a directory in the top data directory called "LinkPoint/" (i.e. 'mivadata/LinkPoint/'), and place the "parsed" certificate file received from Cardservice International in that directory.

### CyberCash

To add CyberCash functionality to your Miva Order form you will first need to obtain a CyberCash CashRegister merchant account.

<b>Merchant ID:</b>	<input type="text" value="test-mck"/>
<b>Key:</b>	<input type="text"/>
<b>URL to CyberCash CashRegister:</b>	<input type="text" value="http://cr.cybercash.com"/>
<b>Type of Merchant:</b>	<input type="checkbox"/> Store Entire Credit Card # <input type="radio"/> Online (Automatic Capture) <input checked="" type="radio"/> Offline or Auth/Post-Auth
<b>Available Payment Methods:</b>	<input checked="" type="checkbox"/> American Express <input checked="" type="checkbox"/> Carte Blanche <input checked="" type="checkbox"/> Diner's Club <input checked="" type="checkbox"/> Discover <input checked="" type="checkbox"/> MasterCard <input checked="" type="checkbox"/> VISA

## Cybersource ICS2

To add CyberSource functionality to your Miva Order form you will first need to obtain a CyberSource merchant account.

These files should be moved into the ICS (Internet Commerce System) client installation keys directory `c:\opt\ics\keys` or the equivalent. These files may also be copied to any server where the ICS client libraries have been installed.

Go to Miva Order administration (`admin.mv`). Expand 'Configure' and click 'Payment.'

The following form will appear:

<b>Merchant ID:</b>	<input type="text" value="ICS2Test"/>
<b>URL to ICSv2 Gateway:</b>	<input type="text" value="http://ics2test.ic3.com"/>
<b>Currency for Transactions:</b>	<input type="text" value="USD"/>
	<input type="checkbox"/> Store Entire Credit Card #
<b>Available Payment Methods:</b>	<input checked="" type="checkbox"/> American Express <input checked="" type="checkbox"/> Diner's Club
	<input checked="" type="checkbox"/> Discover <input checked="" type="checkbox"/> MasterCard
	<input checked="" type="checkbox"/> Visa

## Payflow Pro (Signio)

To add Payflow Pro (Signio) functionality to your Miva Order form you will first need to obtain a Signio merchant account. To sign up, contact:

<http://www.verisign.com/payment/>

Once you have downloaded, installed, and configured the `pntrans.exe` file, go to Miva Order administration (`admin.mv`). Expand 'Configure' and click 'Payment.'

Click 'Add.'

The following form will appear:

<b>User ID:</b>	<input type="text"/>
<b>Password:</b>	<input type="password"/>
<b>Host:</b>	<input type="text" value="test.signio.com"/>
<b>Port:</b>	<input type="text" value="443"/>
Proxy Address:	<input type="text"/>
<b>Port:</b>	<input type="text" value="443"/>
Proxy Logon:	<input type="text"/>
Proxy Password:	<input type="password"/>
	<input type="checkbox"/> Store Entire Credit Card #
Available Payment Methods:	<input checked="" type="checkbox"/> American Express <input checked="" type="checkbox"/> Diner's Club
	<input checked="" type="checkbox"/> Discover <input checked="" type="checkbox"/> JCB
	<input checked="" type="checkbox"/> MasterCard <input checked="" type="checkbox"/> Visa

# Appendix A

## Error Codes

---

This appendix shows the error codes that you may encounter on Miva Order.

- Administration Error Codes
- Order Error Codes
- Database Error Codes
- Utility Error Codes
- ICS Error Codes
- LinkPoint Error Codes
- Mod10 Error Codes
- PaymentNet Error Codes
- CyberCash Error Codes
- CyberSource Error Codes

### Administration Error Codes

Code	File	Message
ORD-ADM-00001	admin.mv	Miva Order has not been initialized. Please use the Miva Order Setup script to initialize the required data files.
ORD-ADM-00002	admin.mv	Unknown Error Action = 'action' Screen = 'screen'
ORD-ADM-00003	admin.mv	Miva_ValidateFileUpload,Miva Order has not been initialized. Please use the Miva Order Setup script to initialize the required data files.
ORD-ADM-00004	admin.mv	Action_Product_Import,MvIMPORT error on product import file
ORD-ADM-00005	admin.mv	Action_Product_Import,Unable to delete 'file'

## Order Error Codes

Code	File	Message
ORD-ORD-00001	order.mv	Miva Order has not been initialized. Please use the Miva Order Setup script to initialize the required data files.
ORD-ORD-00002	order.mv	No products exist. Please use the administration utility to configure Miva Order.
ORD-ORD-00003	order.mv	Unknown Error Action = 'action' Screen = 'screen'

## Database Error Codes

Code	File	Message
ORD-DTB-00001	lib/db.mv	CreateDataFiles,Unable to create directory 'Order/'
ORD-DTB-00002	lib/db.mv	CreateDataFiles,MvCREATE_Error on keys.dbf
ORD-DTB-00003	lib/db.mv	CreateDataFiles, MvMAKEINDEX_Error on keys.mvx
ORD-DTB-00004	lib/db.mv	CreateDataFiles,MvCREATE_Error on orphans.dbf
ORD-DTB-00005	lib/db.mv	CreateDataFiles, MvMAKEINDEX_Error on orphans.mvx
ORD-DTB-00006	lib/db.mv	CreateDataFiles,MvCREATE_Error on country.dbf
ORD-DTB-00007	lib/db.mv	CreateDataFiles,MvCREATE_Error on states.dbf
ORD-DTB-00008	lib/db.mv	CreateDataFiles, MvMAKEINDEX_Error on states.mvx
ORD-DTB-00009	lib/db.mv	CreateDataFiles,MvCREATE_Error on admsess.dbf
ORD-DTB-00010	lib/db.mv	CreateDataFiles, MvMAKEINDEX_Error on ads_sess.mvx
ORD-DTB-00011	lib/db.mv	CreateDataFiles,MvCREATE_Error on reg.dbf

ORD-DTB-00012	lib/db.mv	CreateDataFiles,MvCREATE_Error on admin.dbf
ORD-DTB-00013	lib/db.mv	CreateDataFiles,MvCREATE_Error on urls.dbf
ORD-DTB-00014	lib/db.mv	CreateDataFiles,MvCREATE_Error on ui.dbf
ORD-DTB-00015	lib/db.mv	CreateDataFiles,MvCREATE_Error on notify.dbf
ORD-DTB-00016	lib/db.mv	CreateDataFiles,MvCREATE_Error on currency.dbf
ORD-DTB-00017	lib/db.mv	CreateDataFiles,MvCREATE_Error on shipping.dbf
ORD-DTB-00018	lib/db.mv	CreateDataFiles, MvMAKEINDEX_Error on shipping.mvx
ORD-DTB-00019	lib/db.mv	CreateDataFiles,MvCREATE_Error on products.dbf
ORD-DTB-00020	lib/db.mv	CreateDataFiles, MvMAKEINDEX_Error on prod_id.mvx
ORD-DTB-00021	lib/db.mv	CreateDataFiles, MvMAKEINDEX_Error on prod_cd.mvx
ORD-DTB-00022	lib/db.mv	CreateDataFiles,MvCREATE_Error on basklist.dbf
ORD-DTB-00023	lib/db.mv	CreateDataFiles, MvMAKEINDEX_Error on blst_ses.mvx
ORD-DTB-00024	lib/db.mv	CreateDataFiles,MvCREATE_Error on baskets.dbf
ORD-DTB-00025	lib/db.mv	CreateDataFiles, MvMAKEINDEX_Error on bsk_id.mvx
ORD-DTB-00026	lib/db.mv	CreateDataFiles,MvCREATE_Error on orders.dbf
ORD-DTB-00027	lib/db.mv	CreateDataFiles, MvMAKEINDEX_Error on ord_id.mvx
ORD-DTB-00028	lib/db.mv	CreateDataFiles, MvMAKEINDEX_Error on ord_btch.mvx
ORD-DTB-00029	lib/db.mv	CreateDataFiles, MvMAKEINDEX_Error on ord_prcd.mvx

ORD-DTB-00030	lib/db.mv	CreateDataFiles,MvCREATE_Error on orditems.dbf
ORD-DTB-00031	lib/db.mv	CreateDataFiles, MvMAKEINDEX_Error on orditems.mvx
ORD-DTB-00032	lib/db.mv	CreateDataFiles,MvCREATE_Error on batches.dbf
ORD-DTB-00033	lib/db.mv	CreateDataFiles, MvMAKEINDEX_Error on bch_id.mvx
ORD-DTB-00034	lib/db.mv	OpenDataFiles,MvOPEN_Error on keys.dbf/keys.mvx
ORD-DTB-00035	lib/db.mv	OpenDataFiles,MvOPEN_Error on orphans.dbf/orphans.mvx
ORD-DTB-00036	lib/db.mv	OpenDataFiles,MvOPEN_Error on country.dbf
ORD-DTB-00037	lib/db.mv	OpenDataFiles,MvOPEN_Error on states.dbf/states.mvx
ORD-DTB-00038	lib/db.mv	OpenDataFiles,MvOPEN_Error on admsess.dbf/ads_sess.mvx
ORD-DTB-00039	lib/db.mv	OpenDataFiles,MvOPEN_Error on reg.dbf
ORD-DTB-00040	lib/db.mv	OpenDataFiles,Database version mismatch. Expected x, found y.
ORD-DTB-00041	lib/db.mv	OpenDataFiles,MvOPEN_Error on admin.dbf
ORD-DTB-00042	lib/db.mv	OpenDataFiles,MvOPEN_Error on urls.dbf
ORD-DTB-00043	lib/db.mv	OpenDataFiles,MvOPEN_Error on ui.dbf
ORD-DTB-00044	lib/db.mv	OpenDataFiles,MvOPEN_Error on notify.dbf
ORD-DTB-00045	lib/db.mv	OpenDataFiles,MvOPEN_Error on currency.dbf
ORD-DTB-00046	lib/db.mv	OpenDataFiles,MvOPEN_Error on shipping.dbf/shipping.mvx
ORD-DTB-00047	lib/db.mv	OpenDataFiles,MvOPEN_Error on products.dbf/prod_id.mvx/ prod_cd.mvx
ORD-DTB-00048	lib/db.mv	OpenDataFiles,MvOPEN_Error on basklist.dbf/blst_ses.mvx
ORD-DTB-00049	lib/db.mv	OpenDataFiles,MvOPEN_Error on baskets.dbf/bsk_id.mvx

ORD-DTB-00050	lib/db.mv	OpenDataFiles,MvOPEN_Error on orders.dbf/ord_id.mvx/ord_btch.mvx/ord_prct.mvx
ORD-DTB-00051	lib/db.mv	OpenDataFiles,MvOPEN_Error on orditems.dbf/orditems.mvx
ORD-DTB-00052	lib/db.mv	OpenDataFiles,MvOPEN_Error on batches.dbf/bch_id.mvx
ORD-DTB-00053	lib/db.mv	PackDataFiles,MvPACK_Error on keys.dbf/keys.mvx
ORD-DTB-00054	lib/db.mv	PackDataFiles,MvPACK_Error on orphans.dbf/orphans.mvx
ORD-DTB-00055	lib/db.mv	PackDataFiles,MvPACK_Error on country.dbf
ORD-DTB-00056	lib/db.mv	PackDataFiles,MvPACK_Error on states.dbf/states.mvx
ORD-DTB-00057	lib/db.mv	PackDataFiles,MvPACK_Error on admsess.dbf/ads_sess.mvx
ORD-DTB-00058	lib/db.mv	PackDataFiles,MvPACK_Error on reg.dbf
ORD-DTB-00059	lib/db.mv	PackDataFiles,MvPACK_Error on admin.dbf
ORD-DTB-00060	lib/db.mv	PackDataFiles,MvPACK_Error on urls.dbf
ORD-DTB-00061	lib/db.mv	PackDataFiles,MvPACK_Error on ui.dbf
ORD-DTB-00062	lib/db.mv	PackDataFiles,MvPACK_Error on notify.dbf
ORD-DTB-00063	lib/db.mv	PackDataFiles,MvPACK_Error on currency.dbf
ORD-DTB-00064	lib/db.mv	PackDataFiles,MvPACK_Error on shipping.dbf/shipping.mvx
ORD-DTB-00065	lib/db.mv	PackDataFiles,MvPACK_Error on products.dbf/prod_id.mvx/prod_cd.mvx
ORD-DTB-00066	lib/db.mv	PackDataFiles,MvPACK_Error on basklist.dbf/blst_ses.mvx
ORD-DTB-00067	lib/db.mv	PackDataFiles,MvPACK_Error on baskets.dbf/bsk_id.mvx
ORD-DTB-00068	lib/db.mv	PackDataFiles,MvPACK_Error on orders.dbf/ord_id.mvx/ord_btch.mvx/ord_prct.mvx

ORD-DTB-00069	lib/db.mv	PackDataFiles,MvPACK_Error on orditems.dbf/orditems.mvx
ORD-DTB-00070	lib/db.mv	PackDataFiles,MvPACK_Error on batches.dbf/bch_id.mvx
ORD-DTB-00071	lib/db.mv	State_Update,State 'code' not found
ORD-DTB-00072	lib/db.mv	State_Delete,State 'code' not found
ORD-DTB-00073	lib/db.mv	AdminSession_Update, Administration Session 'session_id' not found
ORD-DTB-00074	lib/db.mv	AdminSession_Delete,Administration Session 'session_id' not found
ORD-DTB-00075	lib/db.mv	AdminSession_Find_Session,Administration Session 'session_id' not found
ORD-DTB-00076	lib/db.mv	Shipping_Delete_Method,Method 'method' not found
ORD-DTB-00077	lib/db.mv	Shipping_Find_Method,Method 'method' not found
ORD-DTB-00078	lib/db.mv	Product_Update,Product 'id' not found
ORD-DTB-00079	lib/db.mv	Product_Delete,Product 'id' not found
ORD-DTB-00080	lib/db.mv	Product_Find_ID,Product 'id' not found
ORD-DTB-00081	lib/db.mv	BasketList_FindSession,Basket 'session_id' not found
ORD-DTB-00082	lib/db.mv	BasketList_Update_LastUpdate, Basket 'session_id' not found
ORD-DTB-00083	lib/db.mv	BasketList_Free_order,Basket 'session_id' not found
ORD-DTB-00084	lib/db.mv	BasketList_Save_Order_Info,Basket 'session_id' not found
ORD-DTB-00085	lib/db.mv	BasketList_Update_Tax,Basket 'session_id' not found
ORD-DTB-00086	lib/db.mv	BasketList_Update_Shipping,Basket 'session_id' not found
ORD-DTB-00087	lib/db.mv	Order_Update,Order 'id' not found
ORD-DTB-00088	lib/db.mv	Order_Update_Totals,Order 'id' not found
ORD-DTB-00089	lib/db.mv	Order_Delete,Order 'id' not found
ORD-DTB-00090	lib/db.mv	Order_Update_Processed,Order 'id' not found

---

ORD-DTB-00091	lib/db.mv	Batch_Find_ID,Batch 'id' not found
ORD-DTB-00092	lib/db.mv	Batch_Delete,Batch 'id' not found

---

## Utility Error Codes

Code	File	Message
ORD-UTL-00001	lib/util.mv	FileUpload_Image_Save,Unable to create directory 'directory'
ORD-UTL-00002	lib/util.mv	FileUpload_Image_Save,Unable to change permissions on directory 'directory'
ORD-UTL-00003	lib/util.mv	FileUpload_Image_Save,Unable to copy 'tempfile' to 'filename'
ORD-UTL-00004	lib/util.mv	FileUpload_Image_Save,Unable to change permissions on 'filename'

---

## ICS Error Codes

Code	File	Message
ORD-ICS-00001	payment-ics2.mv	Payment_Install,Unable to create directory 'Order/ics2/'
ORD-ICS-00002	payment-ics2.mv	Payment_Install, MvCREATE_Error on ics2.dbf
ORD-ICS-00003	payment-ics2.mv	Payment_Install, MvCREATE_Error on ics2card.dbf
ORD-ICS-00004	payment-ics2.mv	Payment_Install, MvMAKEINDEX_Error on ics2card.mvx
ORD-ICS-00005	payment-ics2.mv	Payment_Install, MvCREATE_Error on ics2ordr.dbf
ORD-ICS-00006	payment-ics2.mv	Payment_Install, MvMAKEINDEX_Error on ics2ordr.mvx
ORD-ICS-00007	payment-ics2.mv	ICS2_Open,MvOPEN_Error on ics2.dbf
ORD-ICS-00008	payment-ics2.mv	ICS2_Open,MvOPEN_Error on ics2card.dbf/ics2card.mvx
ORD-ICS-00009	payment-ics2.mv	ICS2_Open,MvOPEN_Error on ics2ordr.dbf/ics2ordr.mvx

## LinkPoint Error Codes

Code	File	Message
ORD-LPT-00001	payment-linkpt.mv	Payment_Install,Unable to create directory 'Order/linkpt/'
ORD-LPT-00002	payment-linkpt.mv	Payment_Install, MvCREATE_Error on linkpt.dbf
ORD-LPT-00003	payment-linkpt.mv	Payment_Install, MvCREATE_Error on lpcard.dbf
ORD-LPT-00004	payment-linkpt.mv	Payment_Install, MvMAKEINDEX_Error on lpcard.mvx

ORD-LPT-00005	payment-linkpt.mv	Payment_Install, MvCREATE_Error on lporder.dbf
ORD-LPT-00006	payment-linkpt.mv	Payment_Install, MvMAKEINDEX_Error on lporder.mvx
ORD-LPT-00007	payment-linkpt.mv	LinkPoint_Open, MvOPEN_Error on linkpt.dbf
ORD-LPT-00008	payment-linkpt.mv	LinkPoint_Open, MvOPEN_Error on lpcard.dbf/ lpcard.mvx
ORD-LPT-00009	payment-linkpt.mv	LinkPoint_Open, MvOPEN_Error on lporder.dbf/ lporder.mvx

## Mod10 Error Codes

Code	File	Message
ORD-M10-00001	payment-mod10.mv	Payment_Install,Unable to create directory 'Order/mod10/'
ORD-M10-00001	payment-mod10.mv	Payment_Install, MvCREATE_Error on mod10crd.dbf
ORD-M10-00001	payment-mod10.mv	Payment_Install, MvMAKEINDEX_Error on m10c_nm.mvx
ORD-M10-00001	payment-mod10.mv	Payment_Install, MvCREATE_Error on mod10ord.dbf
ORD-M10-00001	payment-mod10.mv	Payment_Install, MvMAKEINDEX_Error on m10o_ord.mvx
ORD-M10-00001	payment-mod10.mv	MOD10_Open, MvOPEN_Error on mod10crd.dbf/ m10c_nm.mvx
ORD-M10-00001	payment-mod10.mv	MOD10_Open, MvOPEN_Error on mod10ord.dbf/ m10o_ord.mvx

## Payflow Pro Error Codes

Code	File	Message
ORD-PNT-00001	payment-paynet.mv	Payment_Install,Unable to create directory 'Order/paynet/'
ORD-PNT-00002	payment-paynet.mv	Payment_Install, MvCREATE_Error on paynet.dbf
ORD-PNT-00003	payment-paynet.mv	Payment_Install, MvCREATE_Error on paycard.dbf
ORD-PNT-00004	payment-paynet.mv	Payment_Install, MvMAKEINDEX_Error on paycard.mvx
ORD-PNT-00005	payment-paynet.mv	Payment_Install, MvCREATE_Error on payorder.dbf
ORD-PNT-00006	payment-paynet.mv	Payment_Install, MvMAKEINDEX_Error on payorder.mvx
ORD-PNT-00007	payment-paynet.mv	PaymentNet_Open, MvOPEN_Error on paynet.dbf
ORD-PNT-00008	payment-paynet.mv	PaymentNet_Open, MvOPEN_Error on paycard.dbf/ paycard.mvx
ORD-PNT-00009	payment-paynet.mv	PaymentNet_Open, MvOPEN_Error on payorder.dbf/ payorder.mvx

## CyberCash Error Codes

Code	File	Message
ORD-CSH-00001	payment-cybercash.mv	Payment_Install,Unable to create directory 'Order/cybercash/'
ORD-CSH-00002	payment-cybercash.mv	Payment_Install, MvCREATE_Error on cybercash.dbf

---

ORD-CSH-00003	payment- cybercash.mv	Payment_Install, MvCREATE_Error on cybcard.dbf
ORD-CSH-00004	payment- cybercash.mv	Payment_Install, MvMAKEINDEX_Error on cybcard.mvx
ORD-CSH-00005	payment- cybercash.mv	Payment_Install, MvCREATE_Error on cyborder.dbf
ORD-CSH-00006	payment- cybercash.mv	Payment_Install, MvMAKEINDEX_Error on cyborder.mvx
ORD-CSH-00007	payment- cybercash.mv	CyberCash_Open, MvOPEN_Error on cybrcash.dbf
ORD-CSH-00008	payment- cybercash.mv	CyberCash_Open, MvOPEN_Error on cybcard.dbf/ cybcard.mvx
ORD-CSH-00009	payment- cybercash.mv	CyberCash_Open, MvOPEN_Error on cyborder.dbf/cyborder.mvx

---

## CyberSource Error Codes

Code	File	Message
ORD-CSC-00001	payment-cybersource.mv	Payment_Install, Unable to create directory 'Order/cybrsrc/'
ORD-CSC-00002	payment-cybersource.mv	Payment_Install, MvCREATE_Error on cybrsrc.dbf
ORD-CSC-00003	payment-cybersource.mv	Payment_Install, MvCREATE_Error on cybcard.dbf
ORD-CSC-00004	payment-cybersource.mv	Payment_Install, MvMAKEINDEX_Error on cybcard.mvx
ORD-CSC-00005	payment-cybersource.mv	Payment_Install, MvCREATE_Error on cyborder.dbf
ORD-CSC-00006	payment-cybersource.mv	Payment_Install, MvMAKEINDEX_Error on cyborder.mvx
ORD-CSC-00007	payment-cybersource.mv	CyberSource_Open, MvOPEN_Error on cybrsrc.dbf
ORD-CSC-00008	payment-cybersource.mv	CyberSource_Open, MvOPEN_Error on cybcard.dbf/cybcard.mvx
ORD-CSC-00009	payment-cybersource.mv	CyberSource_Open,MvOPEN_Error on cyborder.dbf/ cyborder.mvx