



HOW TO
Create & Administer a
Miva Merchant Mall

Revision 1.1



Miva Corporation
2629 Ariane Drive
San Diego, CA 92117

Telephone: 858-490-2570

Telefax: 858-490-0548

<http://www.miva.com>

info@miva.com

This document and the software described by this document are copyright 2000 by Miva Corporation. All rights reserved. Use of the software described herein may only be done in accordance with the License Agreement provided with the software. This document may not be reproduced in full or partial form except for the purpose of using the software described herein in accordance with the License Agreement provided with the software. Information in this document is subject to change without notice. Companies, names and data used in the examples herein are fictitious unless otherwise noted.

Miva is a registered trademark of Miva Corporation. Miva Order, Miva Merchant, Miva Mia, Miva Empresa, the Miva "blades" logo, and the Miva Engine are trademarks of Miva Corporation. Windows is the registered trademark of Microsoft Corporation. All other trademarks are the property of their respective owners. This document was developed and produced in San Diego, CA, USA.

MIVA CORPORATION WILL NOT BE LIABLE FOR (A) ANY BUG, ERROR, OMISSION, DEFECT, DEFICIENCY, OR NONCONFORMITY IN MERCHANT OR THIS DOCUMENTATION; (B) IMPLIED MERCHANTABILITY OF FITNESS FOR A PARTICULAR PURPOSE; (C) IMPLIED WARRANTY RELATING TO COURSE OF DEALING, OR USAGE OF TRADE OR ANY OTHER IMPLIED WARRANTY WHATSOEVER; (D) CLAIM OF INFRINGEMENT; (E) CLAIM IN TORT, WHETHER OR NOT ARISING IN WHOLE OR PART FROM MIVA CORPORATION'S FAULT, NEGLIGENCE, STRICT LIABILITY, OR PRODUCT LIABILITY, OR (F) CLAIM FOR ANY DIRECT, INDIRECT, INCIDENTAL, SPECIAL, OR CONSEQUENTIAL DAMAGES, OR LOSS OF DATA, REVENUE, LICENSEE'S GOODWILL, OR USE. IN NO CASE SHALL MIVA CORPORATION'S LIABILITY EXCEED THE PRICE THAT LICENSEE PAID FOR MERCHANT.

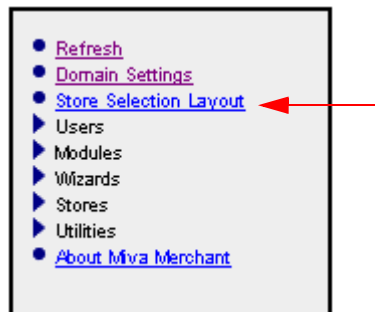
PN - MM1020-02 (ver. 3.0)

HOW TO Create & Administer a Miva Merchant Mall

When you create more than one store within the same domain, a Miva Merchant Mall is automatically created. After you have created the second store, you will notice that a new link (second from left) has been added to the Navigation Bar. The link's default name is Select Store.



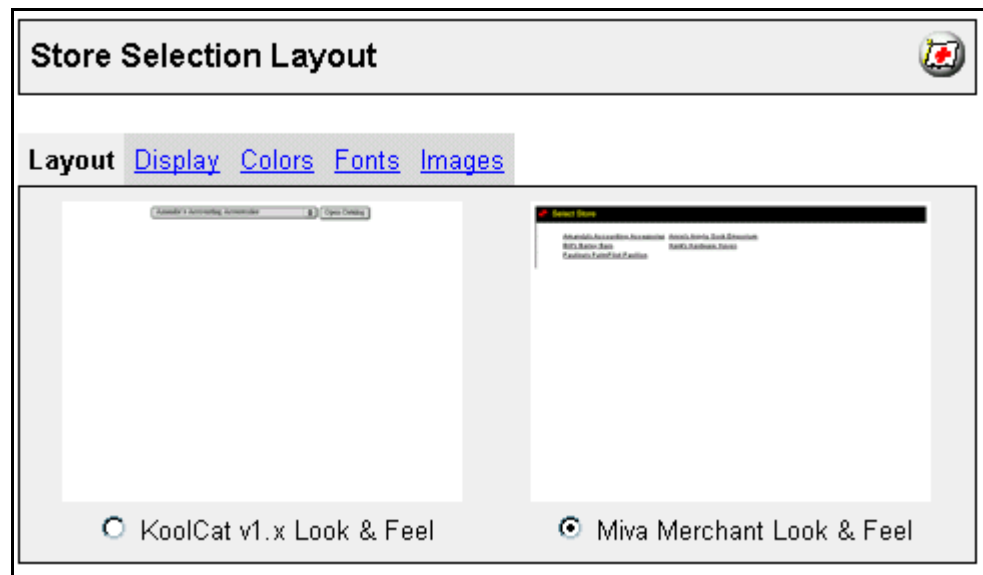
Store Selection Layout is the third link on the Menu in the Administration Interface.



The Mall web page allows your customers to choose which of your stores they want to enter. Design this screen to show off each of your stores.

Layout

The Layout link allows you to choose between Miva KoolCat v1.x and the Miva Merchant. Make your selection by clicking on the radio button below your preferred Look and Feel.



Display

The Display link allows you to define the following areas.

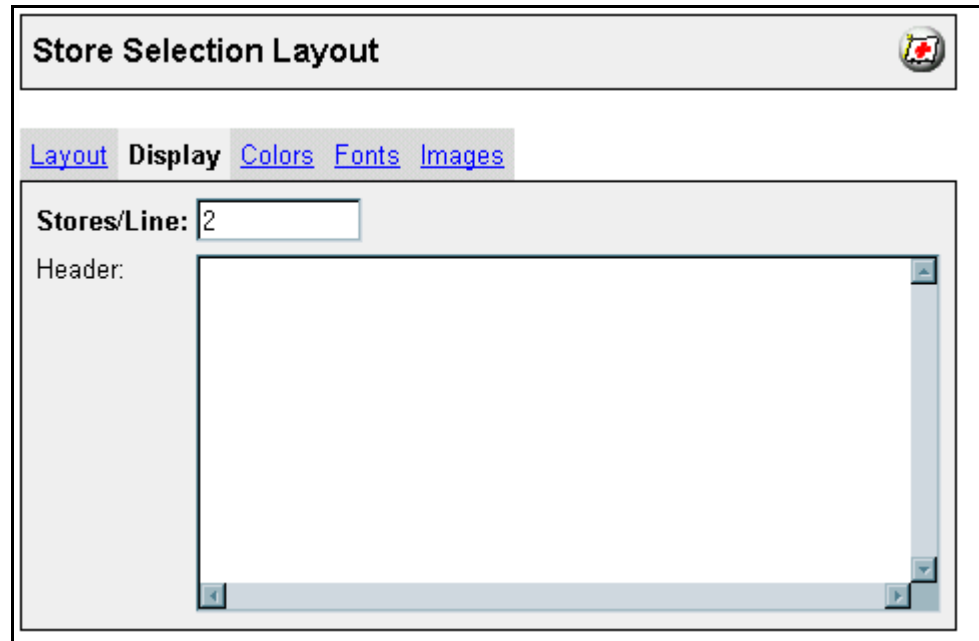
1. Define the number of stores that are displayed on a line of the page.
2. Change the page header and the display graphics for the stores in the mall.

Stores/Line

Enter the number of store links you want to be displayed per line. The default is 2 store links per line.

Header

Enter any combination of text and HTML for your Header.



The HTML code below displays the Mall screen shown on page 4.

```
<b><font size="7"> <center> Welcome to the Write Mall<br><br>
<table border="5" cellspacing="2" cellpadding="2"
Bordercolor="mednightblue">
<tr><colgroup width="1000" span="4" valign="bottom">
<td align="center"><IMG ALT = "store 1 " BORDER = 0
SRC = "graphics/store1.gif"><br><b><font size="5">
<a href="merchant.mv?Screen=SFNT&Store_Code=001">Store 1 </a> </
td>
<td align="center"><IMG ALT = "store 2 " BORDER = 0
SRC = "graphics/store2.gif"><br><b><font size="5">
<a href="merchant.mv?Screen=SFNT&Store_Code=store2">Store 2 </a>
</td>
<td align="center"><IMG ALT = "store 3 " BORDER = 0
SRC = "graphics/store3.gif"><br><b><font size="5">
<a href="merchant.mv?Screen=SFNT&Store_Code=store3">Store 3 </a>
</td>
<td align="center"><IMG ALT = "store 4 " BORDER = 0
SRC = "graphics/store6.gif"><br><b><font size="5">
<a href="merchant.mv?Screen=SFNT&Store_Code=store4">Store 4 </a>
</td>
</tr>
<tr>
<td align="center"><IMG ALT = "store 4-3 " BORDER = 0
SRC = "graphics/store4-3.gif"><br><b><font size="5">
<a href="merchant.mv?Screen=SFNT&Store_Code=store4-3">Store 4-3 </
a> </td>
<td align="center"><IMG ALT = "store 5 " BORDER = 0
SRC = "graphics/store4.gif"><br><b><font size="5">
```

```

<a href="merchant.mv?Screen=SFNT&Store_Code=store5">Store 5 </a>
</td>
<td align="center"><IMG ALT = "store 5-2 " BORDER = 0
SRC = "graphics/store5_2.jpg"><br><b><font size="5">
<a href="merchant.mv?Screen=SFNT&Store_Code=5-2">Store 5-2 </a> </
td>
<td align="center"><IMG ALT = "store 6" BORDER = 0
SRC = "graphics/store5.gif"><br><b><font size="5">
<a href="merchant.mv?Screen=SFNT&Store_Code=6">Store 6 </a> </td>
</tr>
</table>
Click on a Store Name </center>
</font>


```

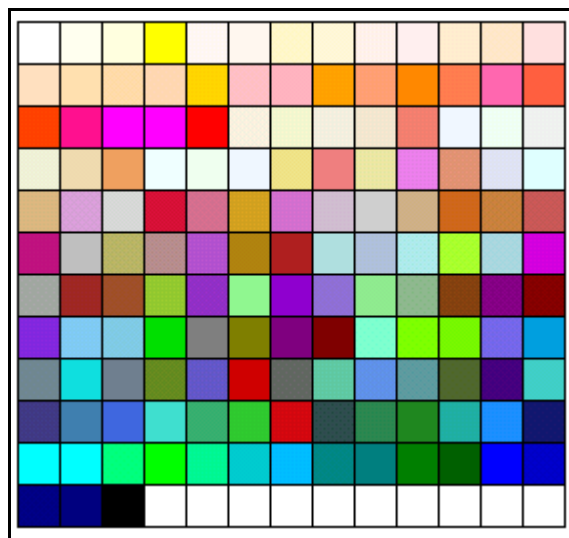


Colors

The Colors form allows you to change the default colors assigned to backgrounds, text, and links on the Mall window:

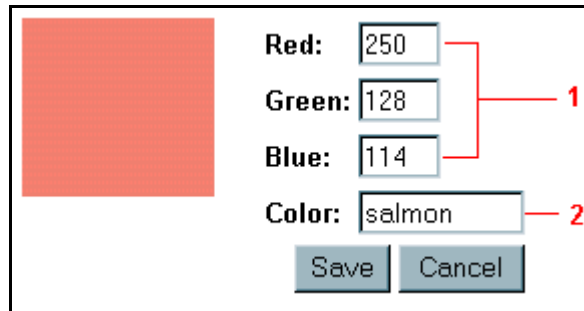
There are two options for entering the color.

1. Enter the color into the text box
This is done using the hex code (i.e. #ffffff) or recognized as a literal (i.e. blue).
2. Click the Select Color button , and use the Color Selector.
There are two options for the Color Selector.
 - a. Click on the palette at the top of the screen to choose a color.



Remember, nothing is final until you click the Update button.

b. Make your own custom color.

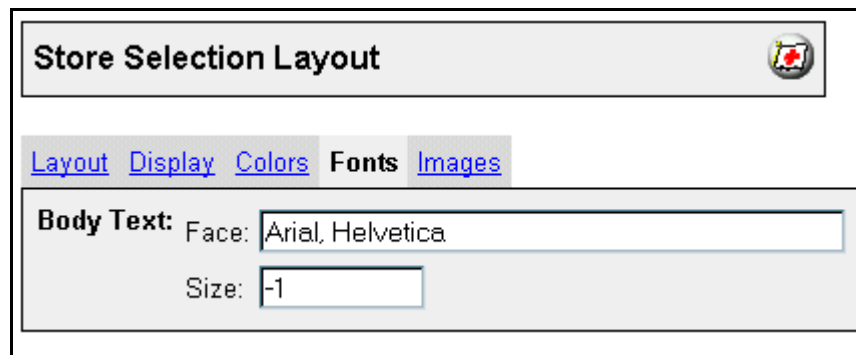


1. Enter the RGB values into the Red, Green, and Blue boxes, or
2. Click the Color box to have the color block to the left display the new color. The hex value will appear in the Color box, or
3. Enter the name or the hex value of the new color in the Color box.
4. Click on Save.

The Cancel button will close the Color Selector window without making any changes.

Fonts

The Fonts link has two options available for font formatting.



1. Font face type

You can define the font that the mall displays by entering it into the Face text box.

There are two general type fonts:

- serif the font has serifs, or hooks, on it. Times and Times New Roman are the most prevalent serif fonts.
- sans-serif the font has no serifs. The two most prevalent sans-serif fonts are Arial and Helvetica.

Enter up to five different fonts if you wish, using comms as delimiters. Enter them in the order you want them to be selected. If the browser does not support the first font listed it will try the second and so forth. If it does not support any of the fonts listed, it uses its own default font.

2. Font size

Font size is generally relative to the default set by the browser. Miva Merchant supports relative sizes from -2 to +2. This means that you can make any text either 2 sizes bigger or two sizes smaller than the default text that is being displayed by the browser. Enter the relative size in the Size text box.

Images

The Images screen allows you to change the default images for the Mall Navigation Bar Logo and the Navigation Bar "Select Store" image. You may also enter a Body Background image on this screen.

Store Selection Layout

[Layout](#) [Display](#) [Colors](#) [Fonts](#) **Images**

Body Background:

Navigation Bar Logo:

Navigation Bar "Select Store":

1. Enter the path to your image in the text box, or
2. Click the Upload File button to display the Upload File form.

Upload File

Overwrite

File:

3. Click Overwrite to replace an existing graphic with the file you select here. When you click Browse, you will open the Choose File window.
4. Select the graphic file and click Open.
5. Click the Update button at the bottom of the Store Selection Layout screen.