



# **Installing Miva Merchant on Windows NT/2000 Server**

Revision 1.0



## **Miva Corporation**

5060 Santa Fe Street  
San Diego, CA 92109

Telephone: 858-490-2570

Telefax: 858-731-4200

<http://www.miva.com>

[info@miva.com](mailto:info@miva.com)

This document and the software described by this document are copyright 2000 by Miva Corporation. All rights reserved. Use of the software described herein may only be done in accordance with the License Agreement provided with the software. This document may not be reproduced in full or partial form except for the purpose of using the software described herein in accordance with the License Agreement provided with the software. Information in this document is subject to change without notice. Companies, names and data used in the examples herein are fictitious unless otherwise noted.

Miva is a registered trademark of Miva Corporation. Miva Script, Miva Order, Miva Merchant, Miva Mia, Miva Empresa, the Miva "blades" logo, and the Miva Engine are trademarks of Miva Corporation. Windows is the registered trademark of Microsoft Corporation. All other trademarks are the property of their respective owners. This document was developed and produced in San Diego, CA, USA.

MIVA CORPORATION WILL NOT BE LIABLE FOR (A) ANY BUG, ERROR, OMISSION, DEFECT, DEFICIENCY, OR NONCONFORMITY IN MERCHANT OR THIS DOCUMENTATION; (B) IMPLIED MERCHANTABILITY OF FITNESS FOR A PARTICULAR PURPOSE; (C) IMPLIED WARRANTY RELATING TO COURSE OF DEALING, OR USAGE OF TRADE OR ANY OTHER IMPLIED WARRANTY WHATSOEVER; (D) CLAIM OF INFRINGEMENT; (E) CLAIM IN TORT, WHETHER OR NOT ARISING IN WHOLE OR PART FROM MIVA CORPORATION'S FAULT, NEGLIGENCE, STRICT LIABILITY, OR PRODUCT LIABILITY, OR (F) CLAIM FOR ANY DIRECT, INDIRECT, INCIDENTAL, SPECIAL, OR CONSEQUENTIAL DAMAGES, OR LOSS OF DATA, REVENUE, LICENSEES GOODWILL, OR USE. IN NO CASE SHALL MIVA CORPORATION'S LIABILITY EXCEED THE PRICE THAT LICENSEE PAID FOR MERCHANT.

MM1108-01 (Miva Merchant v.4.0x)

# Installing Miva Merchant on Windows NT/2000 Server

## Introduction

This manual is intended for Windows NT/2000 system administrators. If you are not a system administrator, you will not be able to perform the installation as described below.

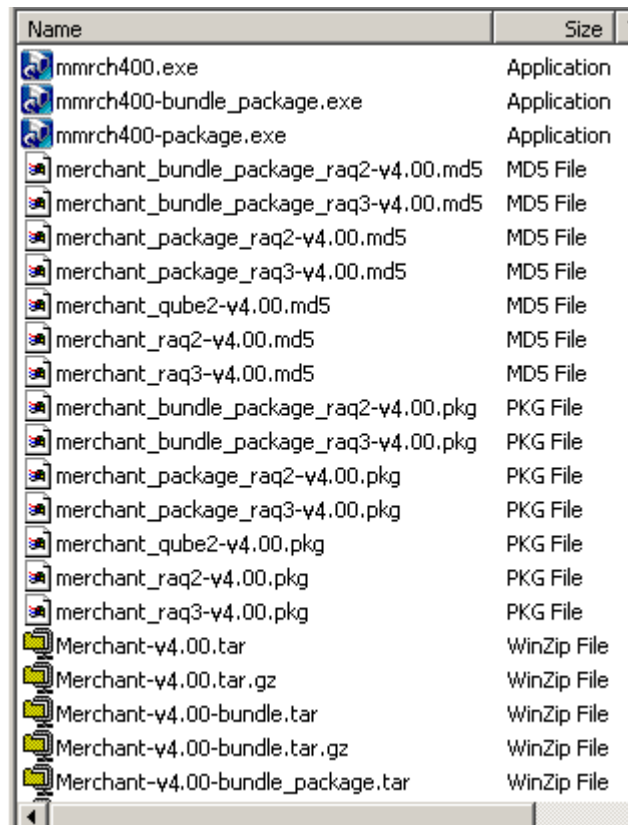
Miva Empresa must be running before starting Miva Merchant installation. If needed, see *Installing Miva Empresa on the NT Server* or *Installing Miva Empresa on the Windows 2000 Server* at [www.miva.com/docs](http://www.miva.com/docs).

When you purchased Miva Merchant, you were sent an ftp address for the Miva Merchant software package. Use the following procedure to download and install the Miva Merchant software package on the NT server.

## Downloading the .exe file to the NT

1. Use the ftp address to access the Miva site.

This process is different for each computer and browser that can be used.



Name	Size	T
mmrch400.exe		Application
mmrch400-bundle_package.exe		Application
mmrch400-package.exe		Application
merchant_bundle_package_raq2-v4.00.md5		MD5 File
merchant_bundle_package_raq3-v4.00.md5		MD5 File
merchant_package_raq2-v4.00.md5		MD5 File
merchant_package_raq3-v4.00.md5		MD5 File
merchant_qube2-v4.00.md5		MD5 File
merchant_raq2-v4.00.md5		MD5 File
merchant_raq3-v4.00.md5		MD5 File
merchant_bundle_package_raq2-v4.00.pkg		PKG File
merchant_bundle_package_raq3-v4.00.pkg		PKG File
merchant_package_raq2-v4.00.pkg		PKG File
merchant_package_raq3-v4.00.pkg		PKG File
merchant_qube2-v4.00.pkg		PKG File
merchant_raq2-v4.00.pkg		PKG File
merchant_raq3-v4.00.pkg		PKG File
Merchant-v4.00.tar		WinZip File
Merchant-v4.00.tar.gz		WinZip File
Merchant-v4.00-bundle.tar		WinZip File
Merchant-v4.00-bundle.tar.gz		WinZip File
Merchant-v4.00-bundle_package.tar		WinZip File

2. Highlight the appropriate file for your installation (mmrch4xx.exe, mmrch4xx-package.exe, or mmrch4xx-bundle\_package.exe in the figure shown above, see the *Types of Installation* below), and download it to the Windows NT/2000 system. You can download it to any folder on your system.

## Types of Installation

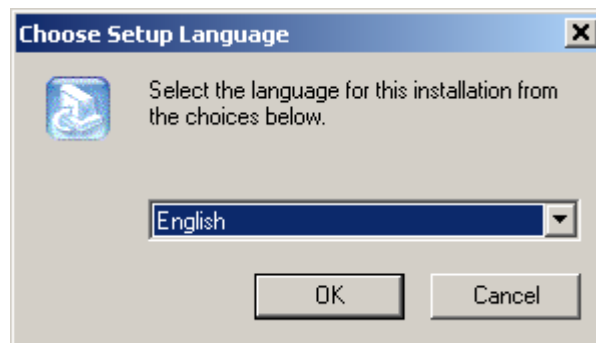
These are the types of installation on the Windows NT/2000 system:

- Single site installation uses mmrch4xx.exe file.
- Package installation uses mmrch4xx-package.exe file.
- Bundle package uses mmrch4xx-bundle\_package.exe file.

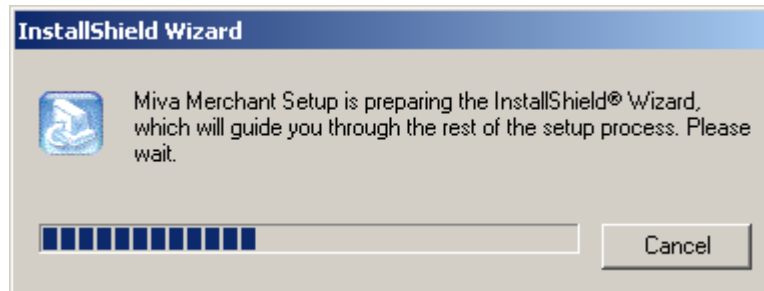
## Installing a Single Miva Merchant Site on System

Use the following procedure to install the mmrch4xx.exe file on the system.

1. Double click on the .exe file to start the installation process. The dialog box shown below will open. Select the language you want.

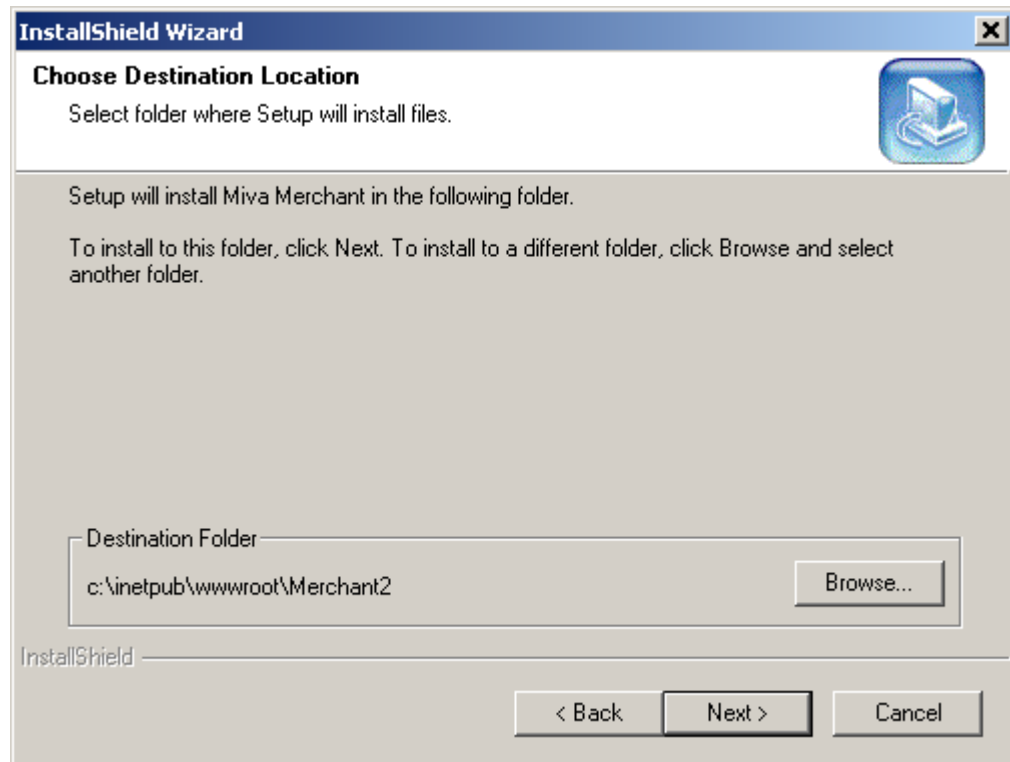


2. The Setup dialog box will open while the installation wizard is brought up.



3. The Welcome window is displayed. Click Next.
4. The License Agreement displays. To accept the terms and install Miva Merchant, click Yes.

5. The Choose Destination Location box displays and the default directory is shown.



---

**Note:** Miva Merchant 4.0 uses the default directory \Merchant2.

6. Click Next to accept the default directory, or Click Browse to define a new one.
7. When the installation wizard completes the installation, the Miva Merchant setup module is run automatically.

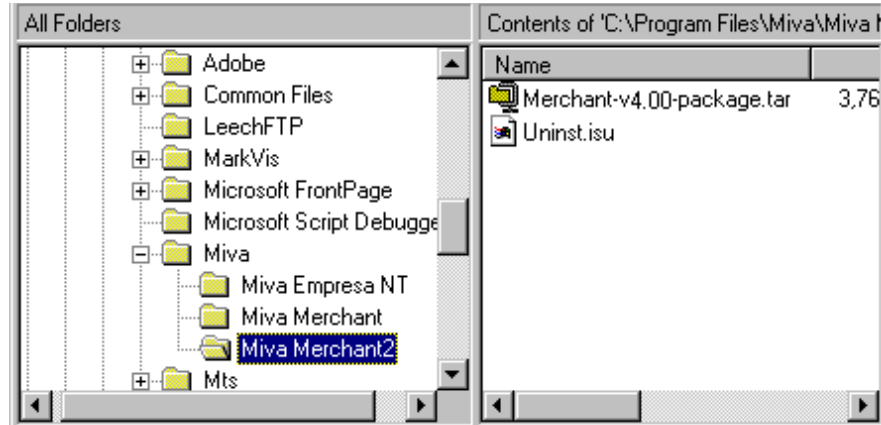
---

**Note:** The Miva Merchant setup wizard is self-explanatory, but if you need additional information, refer to the *Miva Merchant HOW TO Set Up Miva Merchant* for detailed instructions for the setup process.

---

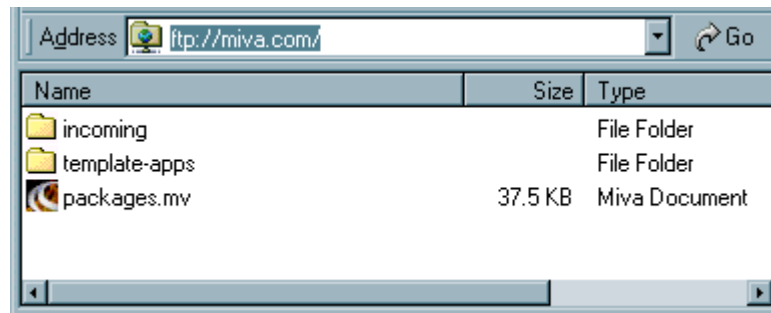
## Installing the Miva Merchant Package on System

The mmrch4xx-package.exe file is installed as shown earlier. The installation procedure installs a .tar file in the directory you selected in the install script.

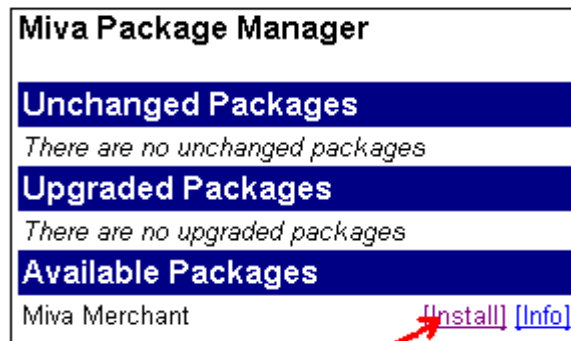


Use the following procedure to continue the package installation.

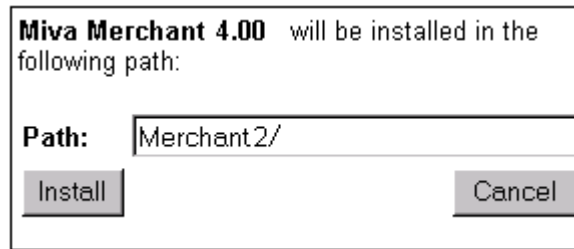
1. With your browser, go to ftp://miva.com.



2. Download the packages.mv file and place it in the Home directory for the site.
3. Double click on the packages.mv file.
4. Enter a password and then retype the password in the Verify Password field.
5. Click Continue.



6. On the Miva Package Manager screen, click Install.



7. Your installation should be installed in the Merchant2 path.
8. Click Install to continue.
9. At this point, you should be able to run Merchant2/setup.mv.
10. You may stop here and give instructions to your customers to run the setup program from:  
`www.<some site .com>/Merchant2/setup.mv`



Additional documentation on Miva Merchant can be found at:  
<http://www.miva.com/docs>